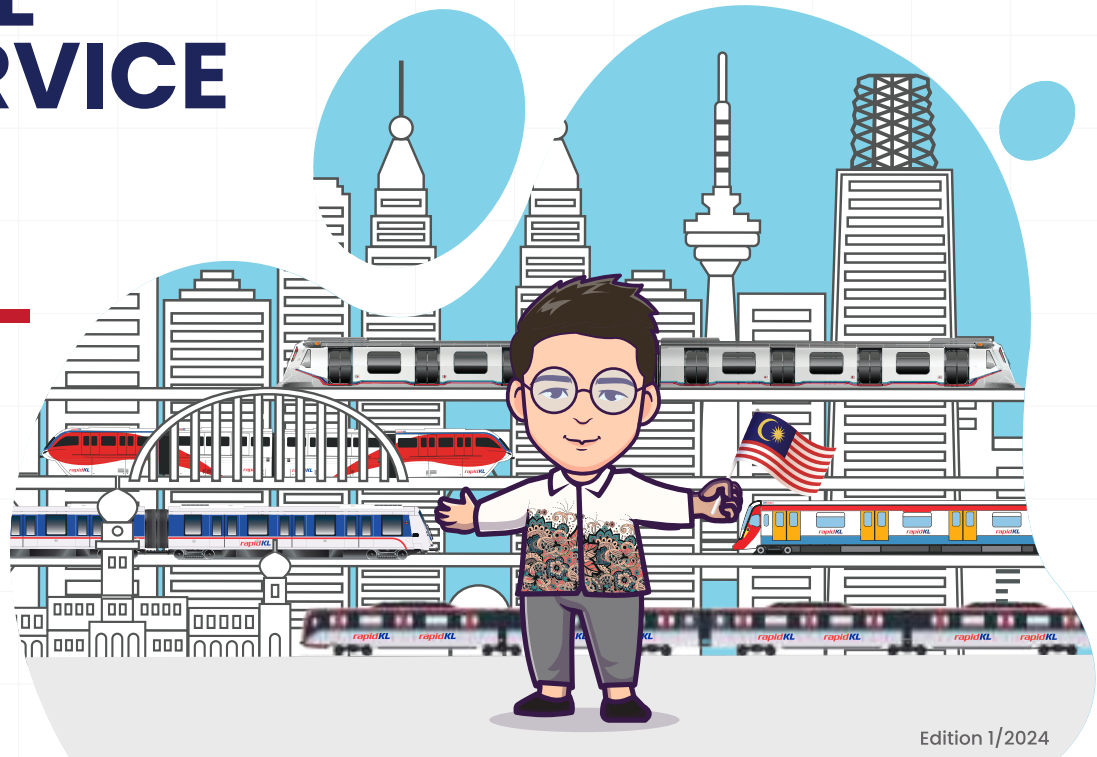


RAPID KL RAIL SERVICE USAGE GUIDELINES

www.myrapid.com.my



Rapid KL Rail Service Usage Guidelines

01
• Rapid KL brings you

02
• Journey planner mobile app

03
• Purchasing tickets at the station

04
• Rapid KL products

06
• Station facilities

05
• Station entry and exits

07
• Guideline on platform

08
• Platform etiquette

09
• Emergencies

10
• Fine

11
• During Emergency at the platform

15
• Baby Stroller / Wheelchair

13 & 14
• Etiquette on the train

12
• Women's Coach

17
• Contact Rapid KL

16
• Foldable Bicycle / Scooter

Rapid KL Brings You

Rapid KL Rail Services



LRT Kelana
Jaya Line



LRT Ampang / Sri
Petaling line



KL Monorail



MRT
Kajang Line



MRT
Putrajaya Line

Rail Station Operating Hours



Station Operating Hours

Monday to Saturday :

6.00 am until 12.00 am*

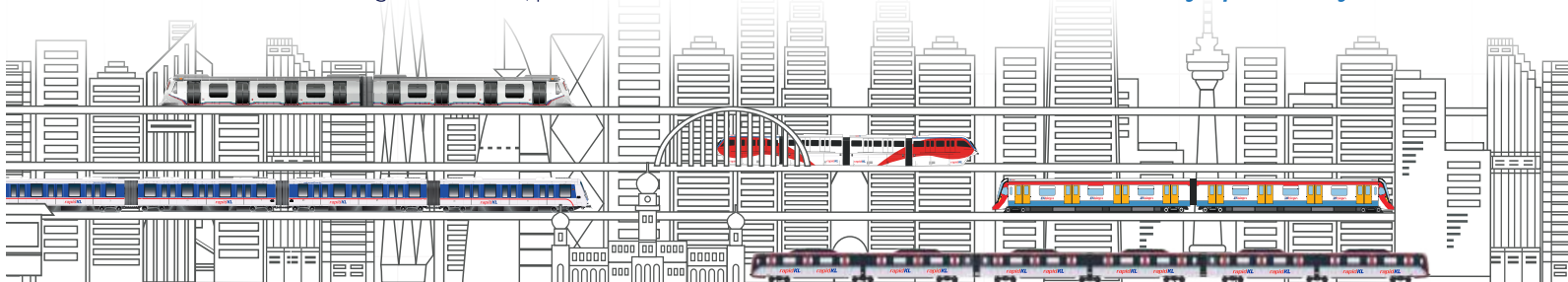
Sunday & Public Holiday :
(Kuala Lumpur & Selangor)

6.00 am until 11.30 pm*

Morning and Evening Peak Hours :

7.00 am until 9.30 am
5.00 pm until 7.30 pm

*Station closing hours differs, please refer to the schedule at the station or online at www.myrapid.com.my



Journey Planner Mobile App



myrapid
PULSE



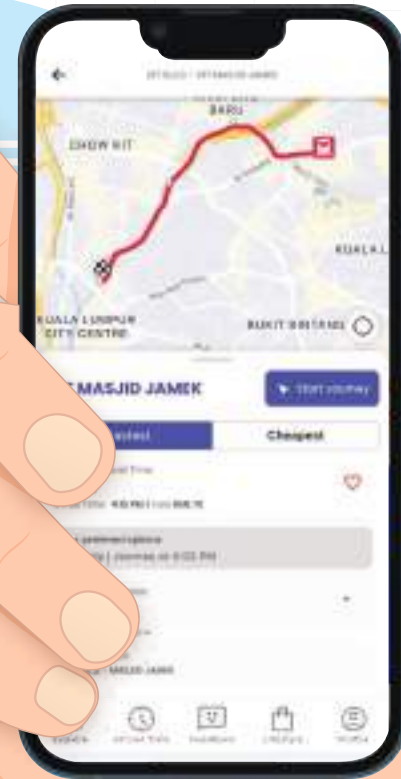
Plan, Track and Ride



Use PULSE by Prasarana to plan your journey



Download Now!



Purchasing Tickets At The Station



Rapid KL Products



Unlimited Travel Pass

- 30 days of unlimited travel pass. For Malaysian citizen only.
- For rides on LRT, MRT, Monorail, BRT Sunway Line, Rapid KL bus, and LRT and MRT feeder bus services in Klang Valley.



MyCity Pass

- 1-day, 2-day or 3-day unlimited rides.



Concession Card & Token

- Fare discount of 50% for senior citizens and students.
- Applications can be made at the Concession Registration Counter located at the Pasar Seni Bus Hub, Conlay MRT Station, or via online.



OKU SMILE Pass is an incentive to provide free rides for Malaysian People With Disabilities (PWD) on all Prasarana operated trains and buses.

To activate the OKU SMILE Pass, please follow the steps below:



1. For the new Prasarana OKU concession card applications, kindly proceed to the Pasar Seni Bus Hub or Conlay MRT Station concession counter and bring together your **identification card** with official OKU card issued by the Department of Social Welfare (Jabatan Kebajikan Masyarakat).
2. For existing Prasarana OKU Concession Card holders, activation of the passes can be done at any Rapid KL LRT station, MRT, Monorail, BRT, and selected bus hubs including Rapid Penang and Rapid Kuantan.

Station Entry and Exits

Please give priority to :

- Pregnant Women.
- Senior Citizens.
- People With Disabilities (PWD).
- Passengers with baby strollers.
- Passengers with luggage.



Dilarang PROHIBITED

- Smoking
- Drinking
- Spitting
- Alcohol consumption
- Use of mobile phones
- Use of cameras
- Use of video recording devices
- Use of selfie sticks
- Use of tripods
- Use of umbrellas
- Use of strollers
- Use of baby carriers
- Use of luggage
- Use of bicycles
- Use of skateboards
- Use of roller skis
- Use of inline skis
- Use of roller shoes
- Use of roller blades
- Use of roller skates
- Use of roller shoes
- Use of roller blades
- Use of roller skates

DENDA FINE RM 500

Station Facilities



Watch your step, okay.

Don't forget to hold the handrail.

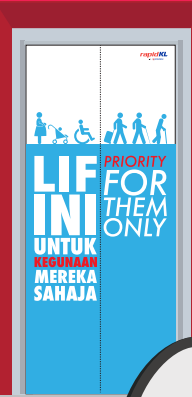
AWAS / CAUTION



- Pegang Susur Tangan Eskalator
HOLD ESCALATOR HANDRAIL
- Berdiri Di antara Garisan Kuning
STAND BETWEEN YELLOW LINES
- Kanak-kanak Harus Dikek
CHILDREN MUST BE SUPERVISED
- Berhati-hati Jika Memakai Pakaian Labuh
BE CAREFUL OF LOOSE CLOTHING



Berhati-hati kerana kasut dan sandal getah boleh tersangkut pada bahagian eskalator.
BE CAREFUL, RUBBER BOOTS AND SANDALS CAN GET CAUGHT IN THE MOVING PARTS OF THE ESCALATOR.



Guideline On Platform

← Platform 1
Gombak

Platform 2
Putra Heights →



Ampang Park		KJ9
LRT Laksan Kelana Jaya		LRT KELANA JAYA LINE
← Platform 1 Gombak	Platform 2 Putra Heights	→
Gombak	Gombak	
Taman Malini	Taman Malini	
Wangsa Maju	Wangsa Maju	
Sri Rampai	Sri Rampai	
Selayang	Selayang	
Jedat	Jedat	
Dato' Keramat	Dato' Keramat	
Damansara	Damansara	
Ampang Park	Ampang Park	
Kampung Baru	Kampung Baru	
4/5	Dang Wangli	
Manjal Jarak	Manjal Jarak	
Pasar Seni	Pasar Seni	
10/11/12/13/14	10/11/12/13/14	
15/16/17/18/19	15/16/17/18/19	
Abdullah Hukum	Abdullah Hukum	
Kerinci	Kerinci	
Universiti	Universiti	
Taman Jaya	Taman Jaya	
Asia Jaya	Asia Jaya	
Taman Paramount	Taman Paramount	
Taman Bahagia	Taman Bahagia	
Kelana Jaya	Kelana Jaya	
Lembah Subang	Lembah Subang	
Ara Damansara	Ara Damansara	
10/11/12/13/14	10/11/12/13/14	
15/16/17/18/19	15/16/17/18/19	
USJ 7	USJ 7	
USJ 11	USJ 11	
USJ 15	USJ 15	
USJ 18	USJ 18	
USJ 21	USJ 21	
Wawasan	Wawasan	
USJ 21	USJ 21	
Alam Megah	Alam Megah	
Subang Alam	Subang Alam	
Putra Heights	Putra Heights	



Platform Etiquette



Mind the gap between platform and train.

Thank you for giving way for us to disembark.

Please queue behind the line.

We are always ready to assist you.

Emergencies

On the platform

1. **DALAM KES KECEMASAN**
BUKA PENUTUP / TEKAN BUTANG
UNTUK IDENTIFIKASI TERSEBUT.
IN CASE OF EMERGENCY
OPEN COVER
PRESS THE BUTTON TO STOP THE TRAIN
FOR EMERGENCY IDENTIFICATION FOR REASON.



1. **DALAM KES KECEMASAN**
BUKA PENUTUP / TEKAN BUTANG
UNTUK IDENTIFIKASI TERSEBUT.
IN CASE OF EMERGENCY
OPEN COVER
PRESS THE BUTTON TO STOP THE TRAIN
FOR EMERGENCY IDENTIFICATION FOR REASON.

Emergency Button

Press the red button to stop the train from entering the platform.

Immediately lodge a report to the station staff on duty with incident details.

For emergency use only. Fines will be imposed if misused.

2. **Untuk Bantuan Kecemasan**
Buka Penutup Telefon /
Angkat Ganggang / Cakap
FOR EMERGENCY ASSISTANCE
OPEN TELEPHONE COVER /
LIFT PHONE / SPEAK
rapidKL



Passenger Access Telephone (PAT)

Contact the Operations Control Centre (OCC) during an emergency.

For example :

1. If you witness anyone trespassing on the tracks.
2. If you witness or experience any sexual harassment.
3. Any suspicious situation.

On the train


1. **INTERCOM KECEMASAN**
PENumpang
1. Tekan butang merah.
2. Sampaikan maklumat.
3. Tutup telefon.
EMERGENCY
INTERCOM
1. Tekan butang merah.
2. Sampaikan maklumat.
3. Tutup telefon.



Emergency Intercom

Press the red button to contact the Operations Control Centre (OCC) during an emergency.

Immediately lodge a report to the station staff on duty with incident details.

2. 

In case of emergency, use the emergency hammer to break the window.

3. **UNTUK PENGUDARAAN KECEMASAN**
FOR EMERGENCY VENTILATION ONLY

During an emergency, immediately **open the window** for emergency ventilation.

4. **Pemadam**
Api Kecemasan
1. Tarik pemegang untuk membuka.
2. Penggera akan berbunyi.
3. Aihkan pemadam api.
EMERGENCY
FIRE EXTINGUISHER
1. PULL HANDLE TO OPEN,
2. ALARM WILL SOUND,
3. REMOVE EXTINGUISHER.

Please use a fire extinguisher in case of fire.

At Station

- 

No Smoking Allowed
Fine not exceeding RM10,000 or imprisonment not more than 2 years or both.

Section 203
Land Public Transport Act (Act 715)
- 

No dangerous goods or baggage
Fine not exceeding RM50,000 or imprisonment not exceeding 7 years or both.

Section 198
Land Public Transport Act (Act 715)
- 

Prohibited to Trespass on Railway Track
Fine not exceeding RM500 and if unwilling to leave, may be fined not exceeding RM1,000.

Section 126
Land Public Transport Act (Act 715)

On the Train

- 

Improper use of emergency signaling devices
Fine not exceeding RM1,000 or imprisonment not exceeding 3 months or both.

Section 122
Land Public Transport Act (Act 715)
- 

Do Not Open The Door While Train Is In Motion
Fine not exceeding RM1,000.

Section 124(b)
Land Public Transport Act (Act 715)
- 

No Indecent Behaviour
Fine not exceeding RM1,000 or imprisonment not exceeding 3 months or both.

Section 200
Land Public Transport Act (Act 715)

During Emergency At The Platform



Women's Coach

Koc WANITA SAHAJA
WOMEN'S ONLY Coach

HOSPITAL KUALA LUMPUR

Kwasa Damansara

Platform 2

Koc WANITA SAHAJA
WOMEN'S ONLY Coach



Women's coach provides a more comfortable and safe journey for female passengers.



Children aged 12 and below like me who are accompanied by a female guardian are allowed to board the Women's Coach.



The disabled community, including their guardians, is prioritised to board any train carriages.

Etiquette On The Train



Etiquette On The Train

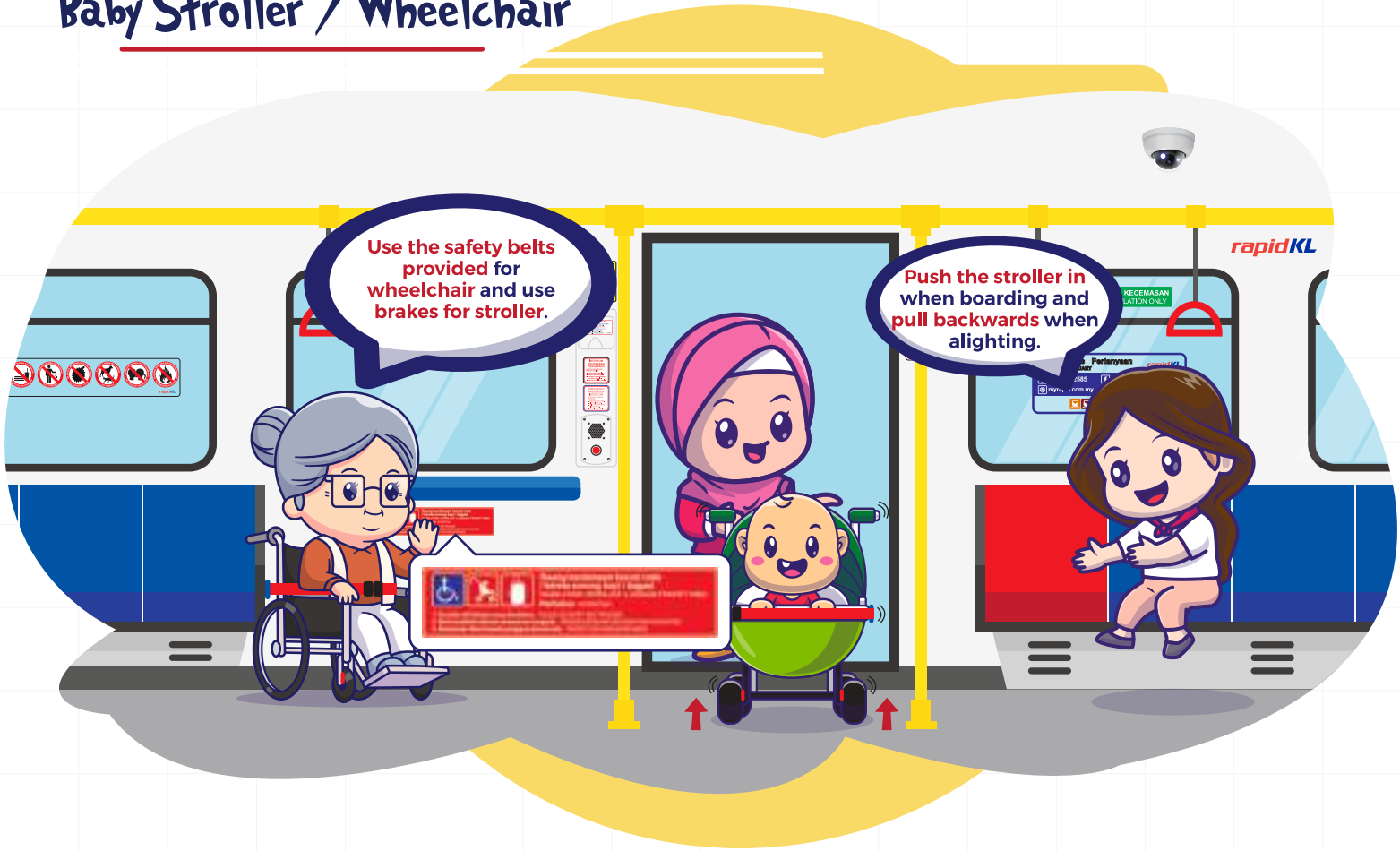


For safety, hold hand grip when standing.

Always be alert to announcements.

Place your bags on the floor like me.

Baby Stroller / Wheelchair



Foldable Bicycle / Scooter



Travelling with bicycle on the train is allowed according to the timing set by Rapid KL.

Day	Time	Foldable Bicycle / Foldable Scooter	Non Foldable Bicycle / Non Foldable Scooter
Monday - Friday	: 10 am - 3 pm	✓	✗
	: 8 pm - 12 am	✓	✗
Saturday, Sunday & Public Holiday	: 6 am - 12 am	✓	✓

*Travel time might be changed from time to time and is subject to Rapid KL's discretion.

**No additional charges will be incurred for users of Rapid KL who wishes to bring their bicycle / foldable scooter or non-foldable scooter on board.

You Are Our Priority



Contact Us

Operation Hours : 6.00 am until 12.00 am



03 - 7885 2585



suggest@rapidkl.com.my

For More Info



[myrapid.com.my/safety-advisory](https://www.myrapid.com.my/safety-advisory)

rapidKL
by LRT Corporation

Hubungi Kami
Chat with Us



Imbas Kod QR atau hantar WhatsApp ke
SCAN QR CODE OR SEND WHATSAPP TO

 **03-7885 2585**



www.myrapid.com.my



myrapid



AskRapidKL



myrapidkl

rapidKL
by  **prasarana**

